

Cooper Bella Vista Elementary

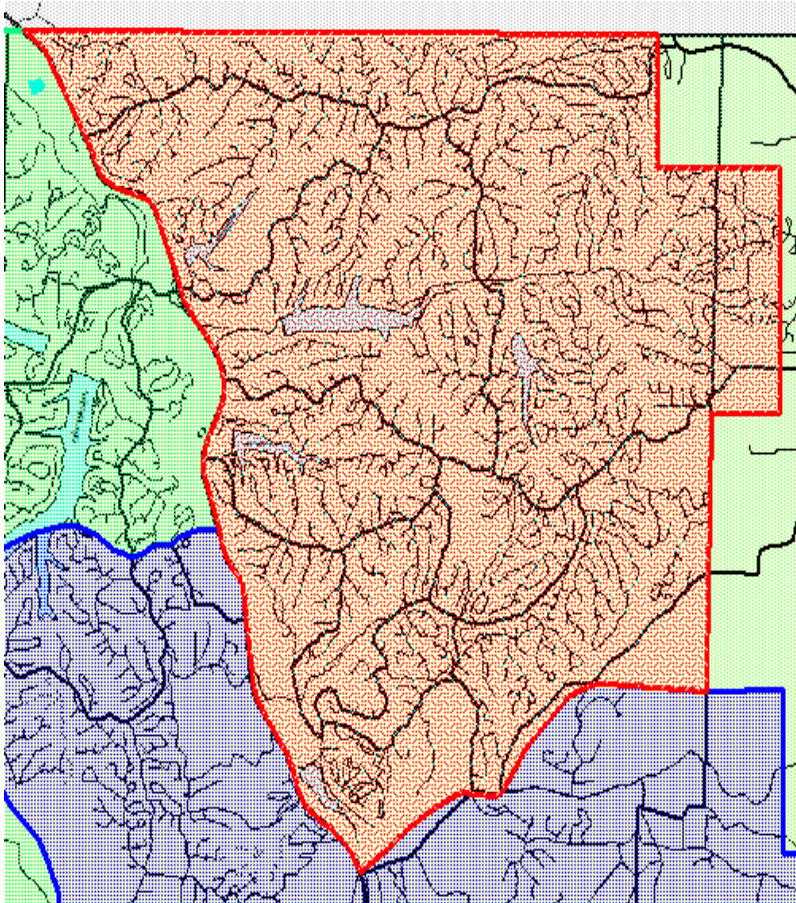
Cooper Elementary zone boundary -

Begin **North Boundary** at N Hwy 71 at Bentonville School District boundary > follow Bentonville School District boundary to end at northeast corner of Bentonville School District boundary.

Begin **East Boundary** at northeast corner of Bentonville School District boundary > follow district boundary to end at point south of E McNelly Rd.

Begin **South Boundary** at intersection N Hwy 71 and McNelly Rd (BC 40) > continue east, north of McNelly Rd (BC 40) to intersection McNelly Rd (BC40) and W Plentywood Rd > continue east, south of McNelly Rd (BC 40) and north of W Plentywood Rd, to intersection McNelly Rd (BC40) and Spanker Creek Rd > continue east, south of McNelly Rd (BC40) and north of Spanker Creek Rd , to intersection McNelly Rd (BC40) and Rolling Hills Rd > continue east to Bentonville School District boundary.

Begin **West Boundary** at N Hwy 71 at Bentonville School District boundary > follow N Hwy 71 south to end at intersection N Hwy 71 and McNelly Rd (BC 40).



Longest AM Route for Zone

School Zone	Route Miles	Route Time	Ride Time
Apple Glen	20	45 min	35 min
Cooper	40	1 hr 30 min	50 min
Centerton Gamble	25	1 hr 10 min	35 min
Central Park	40	1 hr 30 min	45 min
Mary Mae Jones	20	1 hr	30 min
New Elementary	30	1 hr 40 min	55 min
Sugar Creek	25	1 hr 30 min	55 min
Thomas Jefferson	35	1 hr 45 min	1 hr 10 min

Zones created to include student population living within the immediate area to the closest school campus first, using the natural geographic and demographic areas, main through streets, transportation corridors, and transportation zones to divide the Bentonville School District into contiguous zones with a balanced student population with room for future growth. Zones adjusted to accommodate equitable free and reduced lunch population.